



**KIA MOTORS**  
The Power to Surprise™

# SORENTO

## SPECIFICATION

| Transmission  | XE | XS | XT / TITAN |
|---|----|----|------------|
| Low Ratio Gearbox   | X  | X  | X          |
| Selectable 4-Wheel-Drive System (Electric Shift Transfer) | X  | -  | -          |
| Full Time 4-Wheel-Drive System (Torque On Demand)         | -  | X  | X          |
| Appearance  |    |    |            |
| 16" Alloy Wheels  | X  | X  | -          |
| 17" Alloy Wheels (XT Only)                                | -  | -  | X          |
| 18" Rimfire Alloy Wheels (TITAN Only)                     | -  | -  | X          |
| Contrasting Grey-Coloured Bumpers                         | X  | X  | -          |
| Contrasting Grey-Coloured Bodyside Cladding and Bumpers   | X  | X  | -          |
| Body Coloured Bumpers and Bodyside Cladding*              | -  | X  | X          |
| Front Fog Lamps   | X  | X  | X          |
| Roof Rails  | X  | X  | X          |
| Body Coloured Door Handles                                | X  | -  | -          |
| Body Coloured Door Mirrors                                | X  | X  | -          |
| Chrome Trim Door Mirrors                                  | -  | -  | X          |
| Chrome Trim Door Handles                                  | -  | X  | X          |
| Front & Rear Mud Flaps                                    | X  | X  | X          |
| Rear Spoiler  | -  | X  | X          |
| Front Windshield - Tinted Glass                           | X  | X  | X          |
| Tinted Glass - Front Doors                                | X  | X  | X          |
| Tinted Glass - Rear Doors, Rear and Quarter Windows       | X  | -  | -          |
| Privacy Glass - Rear Doors, Rear and Quarter Windows      | -  | X  | X          |
| Audio   |    |    |            |
| CD Audio with MP3 Player                                  | X  | X  | X          |
| Electric Aerial   | X  | X  | X          |
| Eight Speakers  | X  | X  | X          |

Key: Standard = X | Not available = - | Option - Available at extra cost = Opt

\*Available on certain models only - please contact your local Kia dealer for further information.

| Seating & Storage                                       | XE | XS | XT / TITAN |
|---|----|----|------------|
| Grey Cloth Upholstery                                   | X  | -  | -          |
| Grey Leather Upholstery                                 | -  | X  | -          |
| Black Leather Upholstery                                | -  | -  | X          |
| Height & Tilt Adjustable Front Head Restraints          | X  | X  | X          |
| Electrically Adjustable Driver's Seat                   | -  | -  | X          |
| Driver's Seat Height Adjustment                         | X  | X  | X          |
| Driver's Seat Lumbar Adjustment                         | X  | X  | X          |
| Seatback Pocket Storage                                 | X  | X  | X          |
| Heated Front Seats                                      | -  | X  | X          |
| Split Folding Rear Seats (60:40)                        | X  | X  | X          |
| Rear Centre Armrest                                     | X  | X  | X          |
| Luggage Net Fixings & Net                               | X  | X  | X          |
| Cargo Underfloor Storage Compartment                    | X  | X  | X          |
| Rear Quarter Panel Storage Bins                         | X  | X  | X          |
| Lockable Glovebox with Map Tray                         | X  | X  | X          |
| Centre Console Armrest with Storage Box                 | X  | X  | X          |
| Ventilation & Visibility                                |    |    |            |
| Air Conditioning  | X  | -  | -          |
| Dual Full Automatic Climate Control                     | -  | X  | X          |
| Clean Air Filter  | X  | X  | X          |
| Electric Tilt & Sliding Sunroof                         | -  | -  | X          |
| Electric Front & Rear Windows (Auto Down Driver's Side) | X  | X  | X          |
| Electrically Adjustable and Heated Door Mirrors         | X  | X  | X          |
| Electric Folding Mirrors                                | -  | X  | X          |
| Variable Intermittent Front Wipers                      | X  | X  | X          |
| Fixed Intermittent Rear Wiper                           | X  | X  | X          |
| Flip-Up Tailgate Window                                 | X  | X  | X          |
| Heated Rear Window                                      | X  | X  | X          |
| Front Wiper De-Icer                                     | -  | X  | X          |
| Courtesy Room Light with Fade-Out                       | X  | X  | X          |
| Headlamp Levelling Device                               | X  | X  | X          |
| Auto Light Control                                      | -  | X  | X          |
| Headlamp Washers  | -  | -  | X          |
| Load Area Light   | X  | X  | X          |
| Comfort & Convenience                                   |    |    |            |
| Cruise Control  | -  | X  | X          |
| Power Steering with RPM Speed Sensing                   | X  | X  | X          |

| Comfort & Convenience (Continued)                             | XE  | XS  | XT / TITAN |
|---|-----|-----|------------|
| Steering Column Tilt Adjustment                               | X   | X   | X          |
| Leather Steering Wheel & Gear Knob                            | X   | X   | X          |
| Centre Fascia with Metallic Accents                           | X   | X   | -          |
| Premium High Gloss Black Centre Fascia Trim                   | -   | -   | X          |
| Sunvisors with Covered Illuminated Vanity Mirrors             | X   | X   | X          |
| Sliding Sunvisors   | X   | X   | X          |
| Driver's Foot Rest  | X   | X   | X          |
| 2 x 12V Power Outlet (Front & Cargo Area)                     | X   | X   | X          |
| Washer Fluid Low Warning Sensor                               | X   | X   | X          |
| Front Ashtray with Lighter & Illumination                     | X   | X   | X          |
| Front Double Cupholder  | X   | X   | X          |
| Rear Double Cupholder   | X   | X   | X          |
| Grab Handles x 3  | X   | X   | X          |
| Overhead Console with Sunglasses Storage & Map Lamps          | X   | X   | X          |
| Front and Rear Towing Hooks                                   | X   | X   | X          |
| Safety & Security   |     |     |            |
| Anti-lock Braking System (ABS)                                | X   | X   | X          |
| Electronic Stability Programme (ESP)                          | -   | -   | X          |
| Front & Rear Disc Brakes                                      | X   | X   | X          |
| Rear Parking Sensors  | Opt | Opt | X          |
| Remote Central Door Locking                                   | X   | X   | X          |
| Engine Immobiliser  | X   | X   | X          |
| Thatcham Category 1 Approved Alarm                            | Opt | Opt | X          |
| Driver & Front Passenger Airbags                              | X   | X   | X          |
| Front Passenger Airbag Cut-off Switch                         | X   | X   | X          |
| Side Curtain Airbags - Front & Rear                           | X   | X   | X          |
| Driver & Front Passenger Active Headrests                     | X   | X   | X          |
| Front Seatbelt Pre-tensioners with Load Limiters              | X   | X   | X          |
| 3 X 3-Point Seatbelts   | X   | X   | X          |
| 3 Height Adjustable Rear Head Restraints                      | X   | X   | X          |
| ISOFIX Child Seat Anchor Points (Rear) with Top Tether Anchor | X   | X   | X          |
| Rear Child Safety Door Locks                                  | X   | X   | X          |
| Rear Cargo Area Cover   | X   | X   | X          |
| Front and Rear Side Impact Beams                              | X   | X   | X          |
| Locking Wheel Nuts  | X   | X   | X          |
| High Mounted Rear Brake Light                                 | X   | X   | X          |
| Internal Fuel Flap Release                                    | X   | X   | X          |

# TECHNICAL INFORMATION

| Engine Data  |                                      | 2.5 CRDi Diesel |  |
|--|--------------------------------------|-----------------|--|
| Engine Type  | 4 Cylinder In-Line 16 Valve DOHC     |                 |  |
| Capacity (cc)  | 2,497cc                              |                 |  |
| Max Power (bhp @ rpm)  | 168 @ 3,800                          |                 |  |
| Max Torque (Nm @ rpm)  | 392 @ 2,000                          |                 |  |
| Bore / Stroke (mm)   | 91.0 x 96.0                          |                 |  |
| Compression Ratio  | 17.6                                 |                 |  |
| Fuel System  | Common Rail Direct Injection         |                 |  |
| Injection System   | Compression Ignition Type            |                 |  |
| Emission Control   | Diesel Oxidation Catalytic Converter |                 |  |
| Transmission   |                                      |                 |  |
|  | 5 Speed Manual                       | 5 Speed Auto    |  |
| Gear Ratio   |                                      |                 |  |
| 1st  | 4.393                                | 3.827           |  |
| 2nd  | 2.306                                | 2.368           |  |
| 3rd  | 1.452                                | 1.520           |  |
| 4th  | 1.000                                | 1.000           |  |
| 5th  | 0.825                                | 0.834           |  |
| Reverse  | 4.632                                | 2.613           |  |
| Final Gear Ratio   | 3.727                                | 3.333           |  |
| Transfer Case Ratio (High / Low)                             | 1.00 / 2.48                          |                 |  |
| 4-Wheel-Drive System   |                                      |                 |  |
| EST (Electric Shift Transfer) Part Time 4-Wheel-Drive System | XE                                   |                 |  |
| ATT (Active Torque Transfer) Full Time 4-Wheel-Drive System  | XS, XT & TITAN                       |                 |  |
| Body Style   |                                      |                 |  |
| 5 Door SUV   | 5 Seats                              |                 |  |
| Dimensions - Exterior (mm)                                   |                                      |                 |  |
| Overall Length   | 4,590                                |                 |  |
| Overall Width (without Mirrors)                              | 1,885                                |                 |  |
| Overall Height (with Roof Rails)                             | 1,805                                |                 |  |
| Wheelbase  | 2,710                                |                 |  |
| Track Front  | 1,580                                |                 |  |
| Track Rear   | 1,580                                |                 |  |
| Dimensions - Interior (mm)                                   |                                      |                 |  |
| Max. Front Headroom  | 1,008                                |                 |  |
| Max. Rear Headroom   | 1,004                                |                 |  |
| Max. Front Legroom   | 1,082                                |                 |  |
| Max. Rear Legroom  | 916                                  |                 |  |

|   |   |                  |
|---|---|------------------|
| Luggage Space Length                            | 745   |                  |
| Luggage Space Width                             | 1,403   |                  |
| <b>Dimensions - Interior Continued</b>          |   |                  |
| Luggage Space Height (mm)                       | 919   |                  |
| Luggage Area Volume - Seats In Place            | 900 Litres  |                  |
| Luggage Area Volume - Seats Folded              | 1,880 Litres  |                  |
| <b>Suspension, Steering &amp; Brakes</b>        |   |                  |
| Front Suspension                                | Double Wishbone Coil Spring with Shock Absorber, Stabiliser Bar   |                  |
| Rear Suspension                                 | Five-link, Coil Spring, Stabiliser Bar                            |                  |
| Front Anti-Roll Bar                             | Standard  |                  |
| Steering System                                 | Hydraulic Power Assisted, Rack and Pinion, Engine-Speed Sensitive |                  |
| Minimum Turning Radius                          | 5.48m   |                  |
| Anti-lock Braking System                        | Standard - 4 Channel  |                  |
| Front Brakes                                    | Ventilated Disc   |                  |
| Rear Brakes                                     | Ventilated Disc   |                  |
| Parking Brake                                   | Mechanical Acting on the Rear Brakes                              |                  |
| <b>Fuel Consumption</b>                         | <b>Manual</b>   | <b>Automatic</b> |
| Official Government Test Figures mpg (l/100 km) | Diesel  | Diesel           |
| Urban (Cold)                                    | 28.2 (10.0)   | 25.7 (11.0)      |
| Extra Urban                                     | 42.2 (6.7)  | 38.7 (7.3)       |
| Combined  | 35.8 (7.9)  | 32.8 (8.6)       |
| <b>CO<sub>2</sub></b>                           | <b>Manual</b>   | <b>Automatic</b> |
| CO <sub>2</sub> g/km                            | 209   | 228              |
| <b>Specifications</b>                           | <b>Manual</b>   | <b>Automatic</b> |
| Minimum Kerb Weight (kg)                        | 2,065   | 2,079            |
| Gross Vehicle Weight (kg)                       | 2,640   | 2,670            |
| Max. Roof Load Weight (kg)                      | 75  | 75               |
| <b>Max. Towing Weights (kg)</b>                 |   |                  |
| Trailer with Brakes                             | 3,000   | 3,500            |
| Trailer without Brakes                          | 750   | 750              |
| Max Ball Weight (kg)                            | 120   | 140              |
| Fuel Tank Capacity (litres)                     | 80 L  |                  |
| Ground Clearance                                | 203 mm  |                  |
| Approach Angle (degrees)                        | 27.9  |                  |
| Departure Angle (degrees)                       | 26.4  |                  |
| <b>Performance</b>                              | <b>Manual</b>   | <b>Automatic</b> |
| Maximum Speed (mph)                             | 113   | 113              |
| Acceleration (0-60mph)                          | 11.6  | 11.9             |
| <b>Service Intervals</b>                        |   |                  |
|   | Every 10,000 miles or 1 year, whichever is sooner.                |                  |

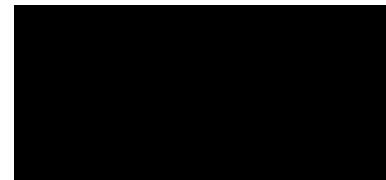
# EXTERIOR/INTERIOR COLOUR OPTIONS



Ice Blue Metallic



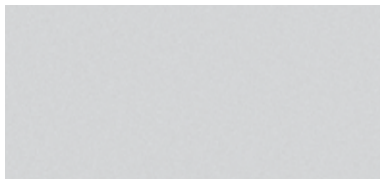
Inky Blue Metallic



Ebony Black Solid



Spicy Red Metallic



Bright Silver Metallic



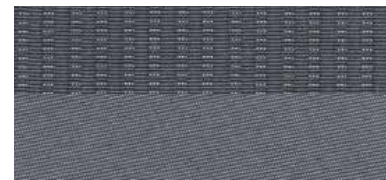
Quartz Grey Metallic



Black Leather (XT / TITAN)



Grey Leather (XS)



Grey Cloth (XE)

Metallic and mica body colours available at extra cost. Please check with your dealer for colour availability by grade.

## KIA WARRANTY OFFER

Over the years, Kia has become one of the most successful car manufacturers in Europe. The key to our success? We give our customers that little bit extra: better service by qualified technicians, regular product innovation and superior warranty coverage.

### 3-YEAR VEHICLE WARRANTY

Our high quality standards are what make superior warranty coverage possible: a 3-year vehicle warranty with no mileage limit on your new Kia.\*

### 3-YEAR PAINT WARRANTY

High quality body paint ensures long-lasting protection and shine for your new Kia.

### 6-YEAR ANTI-PERFORATION WARRANTY

Your new Kia comes with a 6-year anti-perforation warranty.\*\*

### ENVIRONMENT

Kia Motors creates innovative products, ensuring state-of-the-art Design for Recycling (DfR) guidelines. Wherever possible, recycled and recyclable materials are being used in the production of Kia cars, all major plastic parts being chosen for ease of disassembly and stamped with a composition code.

Even at the end of a vehicle's life, one of Kia Motors' environmental targets is the eco-friendly take-back and treatment of End-of-Life Vehicles. Operating a rigid process, Kia Motors has selected partners across

Europe that guarantee environmental protection in the treatment of harmful waste substances. These are then recycled or recovered, ensuring the highest level of environmental protection.

Kia Motors (UK) Ltd has appointed autogreen as our partner to manage the take-back, treatment and recycling of End-of-Life Vehicles in accordance with Directive 2000/53/EC. They can provide advice on whether or not your vehicle qualifies for free take-back and the location of your nearest take-back facility.

\* For full warranty coverage including terms and conditions please refer to your Kia dealer.

\*\*An annual bodywork inspection is required, for which a charge may apply.

Images are for illustrative purposes only and may not be to UK specification. All information and illustrations are based on data available at the time of publication and are subject to change without notice. Contact your local Kia dealer for current information.

Kia Motors (UK) Limited,  
2 The Heights, Brooklands, Weybridge, Surrey, KT13 ONY, UK  
Freephone: 0800 775 777  
www.kia.co.uk

