



KIA MOTORS
The Power to Surprise™

SEDONA

SPECIFICATION

	GS	LS	TS
Appearance			
16" Steel Wheels (225/70 R16)	X	-	-
16" Alloy Wheels (225/70 R16)	-	X	-
17" Alloy Wheels (235/60 R17)	-	-	X
Body Coloured Door Mirrors	X	X	X
Body Coloured Bumpers	X	X	X
Body Coloured Door Handles	X	X	X
Body Coloured Rear Garnish	X	-	-
Chrome Rear Garnish	-	X	X
Body Coloured Radiator Grille	X	-	-
Body Coloured Radiator Grille with Chrome Bars	-	X	X
Waistline Mouldings - Body Coloured	X	X	X
Front Fog Lamps	-	X	X
Windshield - Tinted Glass	X	X	X
Tinted Glass	X	X	X
Privacy Glass - Rear Side, Quarter & Back Windows	-	X	X
Mud Flaps (Front and Rear)	X	X	X
Roof Rails	X	X	X
Audio			
CD Audio with MP3 Player	X	X	X
6 Speaker System	X	X	X
Roof Mounted Aerial	X	X	X
AUX Port	X	X	X
Ventilation & Visibility			
Manual Air Conditioning (Multi-Zone)	X	-	-
Climate Control (Tri-Zone)	-	X	X
Rear Air Conditioning Control Panel (Left Hand Side)	-	X	X

Key: Standard = X | Not available = - | Option - Available at extra cost = Opt

	GS	LS	TS
Ventilation & Visibility (Continued)			
Front and Rear Electric Windows (Driver's Side Auto Down)	X	X	X
Electric Rear Quarter Windows	-	X	X
Front Ventilation Fan	X	X	X
Ventilation Ducts to Rear Compartment (x4)	X	X	X
Internal Headlamp Levelling	X	X	X
Follow-Me-Home Headlamp Function (Switch-Off Delay)	X	X	X
Interior Courtesy Lamp Delay System	X	X	X
2x Front Courtesy Lamps	X	X	X
2x Rear Courtesy Lamps (Front & Rear Control)	X	X	X
Cargo Area Lamp on Tailgate	X	X	X
Seating			
Seven Full-Size Seats (2 + 3 + 2 Configuration)	X	X	X
Rear Seats - Removable (2nd & 3rd Rows)	X	X	X
Upholstery - Woven Cloth	X	-	-
Upholstery - Premium Cloth	-	X	-
Upholstery - Leather	-	-	X
Front Row Folding Table (Between Driver & Passenger Seats + 4 Cupholders)	-	X	X
Aircraft-Style Seat Back Tables - Front Row	-	X	-
Seat Back Tables - 2nd & 3rd Rows	X	X	X
Seat Back Pocket Storage - Front Row	X	X	X
Sliding & Reclining Front & 3rd Rows	X	X	X
Driver's Seat Adjustable Lumbar Support	X	X	X
Armrests - Front Seats	X	X	X
6-way Electrically Adjustable Driver's Seat	-	-	X
Heated Front Seats	-	-	X
One Touch Double Folding, Sliding & Fix 2nd & 3rd Row Seats	X	X	X
Instrumentation			
Variable Intermittent Front Wipers	X	X	X
Intermittent Rear Wash/Wiper	X	X	X
Tachometer	X	X	X
Comfort & Convenience			
Dual Sliding Rear Doors (with Hold Open Lock)	X	X	X
Dual Sliding Electric Rear Doors*	-	X	X
Cruise Control	-	-	X
Electrically Adjustable Door Mirrors	X	X	X
Heated Door Mirrors	-	X	X
Electric Folding Door Mirrors	-	-	X
Front Door Storage Pocket with Drinks Holder	X	X	X

* Sliding Electric Rear Doors

- switch operated via overhead console, key operation, 2nd row internal operation & external one touch door handle facility

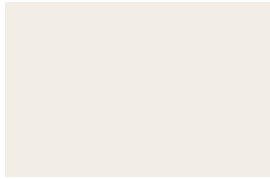
	GS	LS	TS
Comfort & Convenience (Continued)			
CD Holder in Centre Console	X	X	X
Metal Grain Centre Fascia	-	X	X
Rear Seat Storage Pocket	X	X	X
8 Cup Holders	X	-	-
12 Cup Holders	-	X	X
Ignition On/Door Open Warning Chime	X	X	X
Illuminated Front Ashtray and Lighter	X	X	X
Illuminated Lockable Glovebox with Two Storage Boxes	X	X	X
2x 12V Power Outlets - Front & Cargo Area	X	X	X
Passenger Assist Grips (1 front / 4 rear)	X	X	X
2x Coats Hooks (3rd Row)	X	X	X
Sunvisors with Covered Mirror	X	-	-
Sunvisors with Covered Illuminated Mirror	-	X	X
Internal Fuel Flap Release	X	X	X
Digital Clock	X	X	X
Overhead Sunglass Holder - Driver's Side	X	X	X
Conversation Mirror	X	X	X
Centre Console Storage Box	X	X	X
Metal Painted Inner Door Handles	-	X	X
Steering Wheel Tilt Adjustment	X	X	X
Leather Wrapped Steering Wheel	-	X	X
Safety			
Twin, Front Side and Full-Length Curtain Airbags	X	X	X
Passenger Airbag Safety Cut-Off Switch	X	X	X
ABS with Electronic Brakeforce Distribution (EBD)	X	X	X
Front & Rear Disc Brakes	X	X	X
Reversing Distance Sensors	Opt	X	X
Active Front Head Restraints	-	-	X
Energy Absorbing Steering Column	X	X	X
Front Seatbelt Pretensioners	X	X	X
Height Adjustable Seatbelts - 1st and 2nd Rows (Outer Seats)	X	X	X
3-Point Seatbelts for all 7 Occupants	X	X	X
ISOFIX Child Seat Anchor Points - 2nd Row (Outer Seat) & 3rd Row	X	X	X
Anti-Pinch Safety Feature on Electric Sliding Rear Doors	-	X	X
Height Adjustable 1st, 2nd & 3rd Row Head Restraints	X	X	X
Side Door Impact Beams	X	X	X
Security			
Engine Immobiliser	X	X	X
Remote Central Door Locking (with Panic Alarm)	X	X	X
Locking Wheel Nuts	-	X	X

TECHNICAL INFORMATION

Engine data	Diesel		Petrol
Engine Type	DOHC Turbo Diesel		V6 Petrol
Engine	2.9 CRDi (VGT)		2.7 V6
Capacity (cc)	2,902		2,656
Max Power (bhp @ rpm)	183 bhp @ 3,800		186.4 bhp @ 6,000
Max Torque (Nm @ rpm)	343 Nm @ 1,750 - 3,500		249 Nm @ 4,000
Bore / Stroke (mm)	97.1 x 98.0		86.7 x 75.0
Transmission	Diesel		Petrol
Manual	5-Speed Transmission with Clutch Locking		5-Speed Transmission with Clutch Locking
Automatic	Electronically Controlled 5-Speed		-
Body style	Multi-Purpose Vehicle		Multi-Purpose Vehicle
Number of Seats	7 Seats		7 Seats
Dimensions - (mm)	Diesel		Petrol
Overall Length	4,810		
Overall Width	1,985		
Overall Height (with Roof Rails)	1,760 (1,815 with Roof Rack)		
Wheelbase	2,890		
Overhang	975 / 945		
Internal Length	2,727		
Internal Width	1,700		
Internal Height	1,260		
Interior Volume (1st / 2nd / 3rd)	1,770 / 1,523 / 1,083		
Specifications	Manual	Auto	Manual
Gross Vehicle Weight (kg)	2,900	2,920	2,765
Min Kerb Weight (kg)	2,168	2,189	2,024
Max. Towing Weight (kg)			
Trailer with Brakes	2,000		
Trailer without Brakes	750		
Max. Ball Weight	85		

Max. Towing Weight (kg) (Continued)			
Maximum Roof Load (kg)	75		
Minimum Ground Clearance (mm)	167		
Turning Circle Radius (m)	5.82 (5.51 with Variable Rack Stroke System)		
Fuel Tank Capacity (litres)	80		
Suspension, braking & steering	Diesel		Petrol
Front Suspension	MacPherson Struts, Coil Spring, Anti-roll Bar		
Rear Suspension	Multi-link, Coil Springs		
Steering System	Rack and Pinion with Power-Assistance		
Brake Type	Hydraulic, Vacuum Power-Assisted with EBD ABS		
Front Brakes	11.8" Vented Discs		
Rear Brakes	12.8" Solid Discs		
Performance	Manual	Auto	Manual
Maximum Speed - mph (kph)	122 (197)	120.5 (194)	119 (192)
Acceleration 0-62mph (secs)	15.0	15.7	14.0
Fuel consumption	Manual	Auto	Manual
(Official Government Test Figures) mpg (l/100km)			
Urban (Cold)	27.7 (10.2)	23.0 (12.3)	19.3 (14.6)
Extra Urban	44.1 (6.4)	40.4 (7.0)	33.6 (8.4)
Combined	36.2 (7.8)	31.4 (9.0)	26.4 (10.7)
Emissions	Manual	Auto	Manual
CO ₂ (g/km)	206	224	255
Noise levels	Manual	Auto	Manual
Moving (dB(A)/E)	74	72	72
Stationary (dB(A)/E)	77	78	79
Insurance Groups	Diesel		Petrol
Sedona GS M/T & A/T	12D		12D
Sedona LS M/T & A/T	13D		-
Sedona TS M/T & A/T	13D		-
Service intervals			
	10,000 miles or 1 year, whichever is sooner		

EXTERIOR/INTERIOR COLOUR OPTIONS



Glacier White Solid



Clear Silver Metallic



Glacier Blue Metallic



Midnight Black Mica



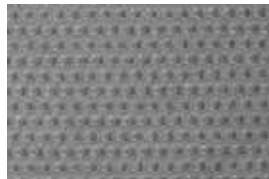
Velvet Indigo Blue Metallic



Regency Red Mica



Cloth (GS)



Cloth (LS)



Grey Leather (TS)

Colour availability varies by grade and KMUK stock levels, so please contact your Kia dealer for details of colour availability across the Sedona range.

KIA WARRANTY OFFER

Over the years, Kia has become one of the most successful car manufacturers in Europe. The key to our success? We give our customers that little bit extra: better service by qualified technicians, regular product innovation and superior warranty coverage.

3-YEAR VEHICLE WARRANTY

Our high quality standards are what make superior warranty coverage possible: a 3-year vehicle warranty with no mileage limit on your new Kia.*

3-YEAR PAINT WARRANTY

High quality body paint ensures long-lasting protection and shine for your new Kia.

6-YEAR ANTI-PERFORATION WARRANTY

Your new Kia comes with a 6-year anti-perforation warranty.**

ENVIRONMENT

Kia Motors creates innovative products, ensuring state-of-the-art Design for Recycling (DfR) guidelines. Wherever possible, recycled and recyclable materials are being used in the production of Kia cars, all major plastic parts being chosen for ease of disassembly and stamped with a composition code. Even at the end of a vehicle's life, one of Kia Motors' environmental targets is the eco-friendly take-back and treatment of End-of-Life Vehicles. Operating a rigid process, Kia Motors has selected partners across

Europe that guarantee environmental protection in the treatment of harmful waste substances. These are then recycled or recovered, ensuring the highest level of environmental protection.

Kia Motors (UK) Ltd has appointed autogreen as our partner to manage the take-back, treatment and recycling of End-of-Life Vehicles in accordance with Directive 2000/53/EC. They can provide advice on whether or not your vehicle qualifies for free take-back and the location of your nearest take-back facility.

*For full warranty coverage including terms and conditions please refer to your Kia dealer.

**An annual bodywork inspection is required, for which a charge may apply.

Images are for illustrative purposes only and may not be to UK specification. All information and illustrations are based on data available at the time of publication and are subject to change without notice. Contact your local Kia dealer for current information.